



AT EVERY STEP OF THE WAY

300 Amp Ground Clamp

P/N: 8100746

Tool Features

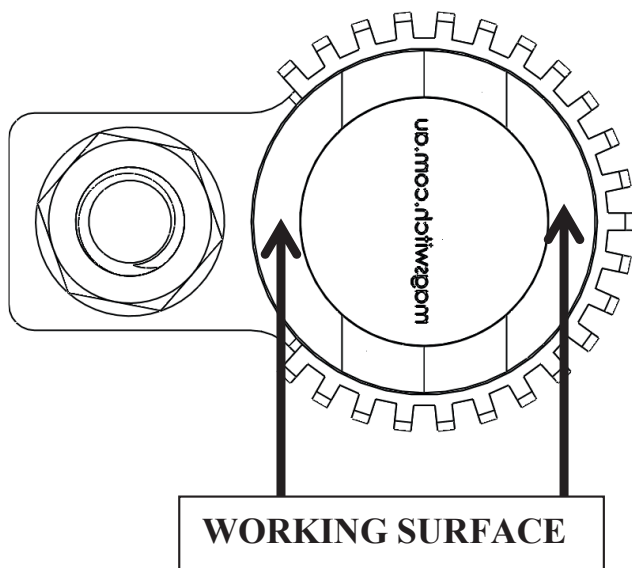
The Magswitch finned magnetic ground clamps let welders quickly set up, weld and move on to the next job. Simply place it on a clean work surface, turn it on and start welding. Instant ground on a flat surface or a pipe. The finned design lowers the temperature of the unit by almost 27%.



WARNING!
DO NOT OPERATE UNLESS IN
CONTACT WITH FERROUS TARGET

Specifications

Magnet Strength	90 lbs	40 kg
Net Weight	0.8 lbs	0.4 kg
Overall Height	57.3 mm	
Magnetic Pole Footprint	40 mm Diameter	



Magswitch Technologies | 1000 S. McCaslin Blvd.
Suite 301 | Superior | Colorado 80027
+1 (303) 468.0662 | sales@magswitch.com

MSA Magnetics | 14250 Judicial Road
Burnsville, MN | 55306 | 651-272-2950
sales@msamagnetics.com

300 AMP GROUND CLAMP
8100746

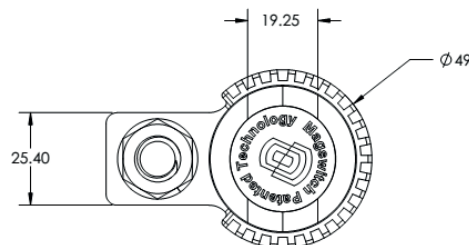
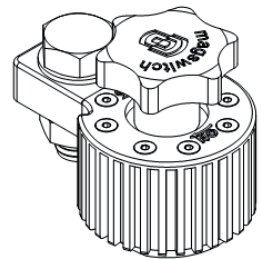
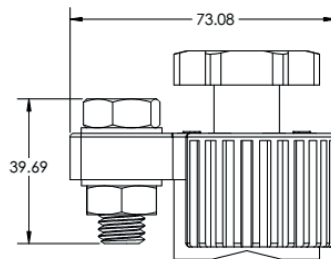
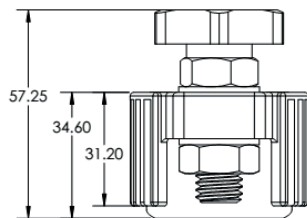
Doc Num 01

Subject to technical and color changes. No liability for errors and misprints assumed. © Magswitch Technologies 2024

300 Amp Ground Clamp

P/N: 8100746

Drawings



Magswitch Technologies | 1000 S. McCaslin Blvd.
Suite 301 | Superior | Colorado 80027
+1 (303) 468.0662 | sales@magswitch.com

MSA Magnetics | 14250 Judicial Road
Burnsville, MN | 55306 | 651-272-2950
sales@msamagnetics.com

300 AMP GROUND CLAMP
8100746

Doc Num 01

Subject to technical and color changes. No liability for errors and misprints assumed. © Magswitch Technologies 2024