



AT EVERY STEP OF THE WAY

## 800 Amp Ground Clamp

P/N: 8100552

### Tool Features

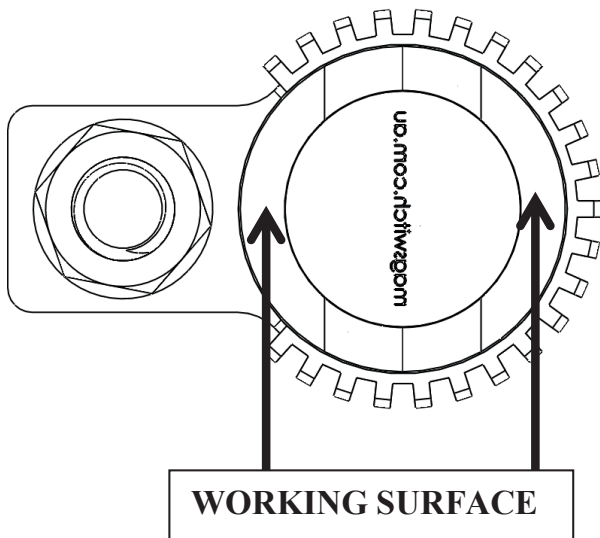
The Magswitch Finned Magnetic Ground Clamps let welders quickly set up, weld and move on to the next job. Simply place it on a clean work surface, turn it on and start welding. Instant ground on a flat surface or a pipe. The finned design lowers the temperature of the unit by almost 27%.



**WARNING!**  
**DO NOT OPERATE UNLESS IN**  
**CONTACT WITH FERROUS TARGET**

### Specifications

Magnet Strength	300 lbs	136 kg
Net Weight	3.8 lbs	1.6 kg
Overall Height	2.9 in	74 mm
Magnetic Pole Footprint	89 mm diameter	



Magswitch Technologies | 1000 S. McCaslin Blvd.  
Suite 301 | Superior | Colorado 80027  
+1 (303) 468.0662 | sales@magswitch.com

MSA Magnetics | 4 Prince of Wales Ave  
Unanderra NSW | 2526 | +61 2 4272 8180  
sales@msamagnetics.com.au

**800 AMP GROUND CLAMP**  
**8100552**

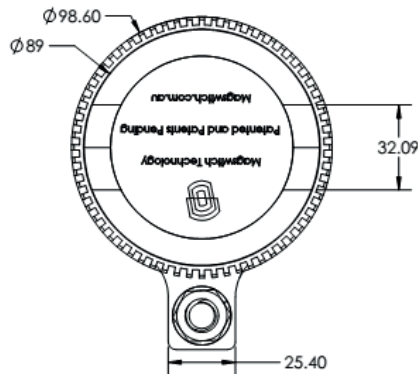
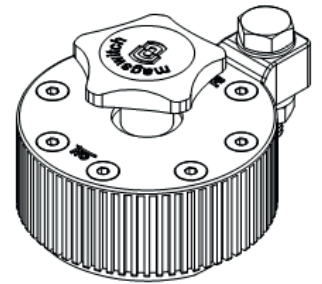
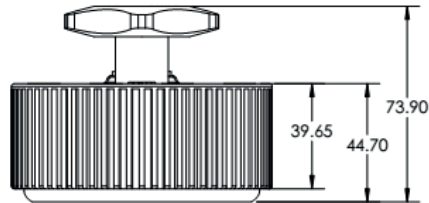
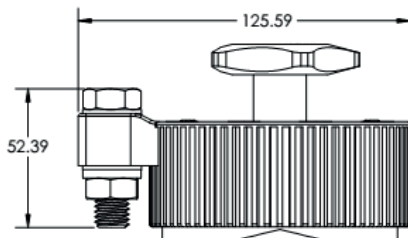
Doc Num 01

Subject to technical and color changes. No liability for errors and misprints assumed. © Magswitch Technologies 2024

# 800 Amp Ground Clamp

P/N: 8100552

## Drawings



Magswitch Technologies | 1000 S. McCaslin Blvd.  
Suite 301 | Superior | Colorado 80027  
+1 (303) 468.0662 | sales@magswitch.com

MSA Magnetics | 4 Prince of Wales Ave  
Unanderra NSW | 2526 | +61 2 4272 8180  
sales@msamagnetics.com.au

**800 AMP GROUND CLAMP**  
**8100552**

Doc Num 01

Subject to technical and color changes. No liability for errors and misprints assumed. © Magswitch Technologies 2024