



AT EVERY STEP OF THE WAY

400 Fixed Manual Hand Lifter

P/N: 8100810

Tool Features

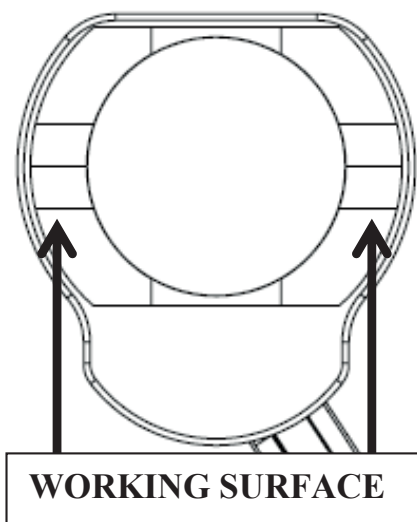
The Magswitch fixed manual hand lifter series allows for safe and convenient lifting. With an ergonomic fixed handle, the 400 hand lifter features a single 90° side-actuation lever with a locking mechanism that prevents accidental release. It is perfect for handling sharp or dirty steel or scrap. It can be used for dragging or handling small steel sheet.

WARNING!
DO NOT OPERATE UNLESS IN
CONTACT WITH FERROUS TARGET



Specifications

| | | |
|---------------------------|--------------|---------|
| Max Breakaway * | 390 lbs | 177 kg |
| Full Saturation Thickness | 3/8in | 9.5mm |
| Net Weight | 2.4 lbs | 1.1 kg |
| Overall Height | 5.0in | 127.0mm |
| Magnetic Pole Footprint | 67mm x 42 mm | |



* Max Breakaway determined in laboratory environment on 2" thick SAE1018 Steel with surface roughness 63 micro inches. Many factors contribute to the actual breakaway force in each application. Always test the magswitch in each application before deployment. Refer to the magswitch information booklet for more information.



Magswitch Technologies | 1000 S. McCaslin Blvd.
Suite 301 | Superior | Colorado 80027
+1 (303) 468.0662 | sales@magswitch.com

MSA Magnetics | 14250 Judicial Road
Burnsville, MN | 55306 | 651-272-295
sales@msamagnetics.com

400 FIXED MANUAL HAND LIFTER
8100810

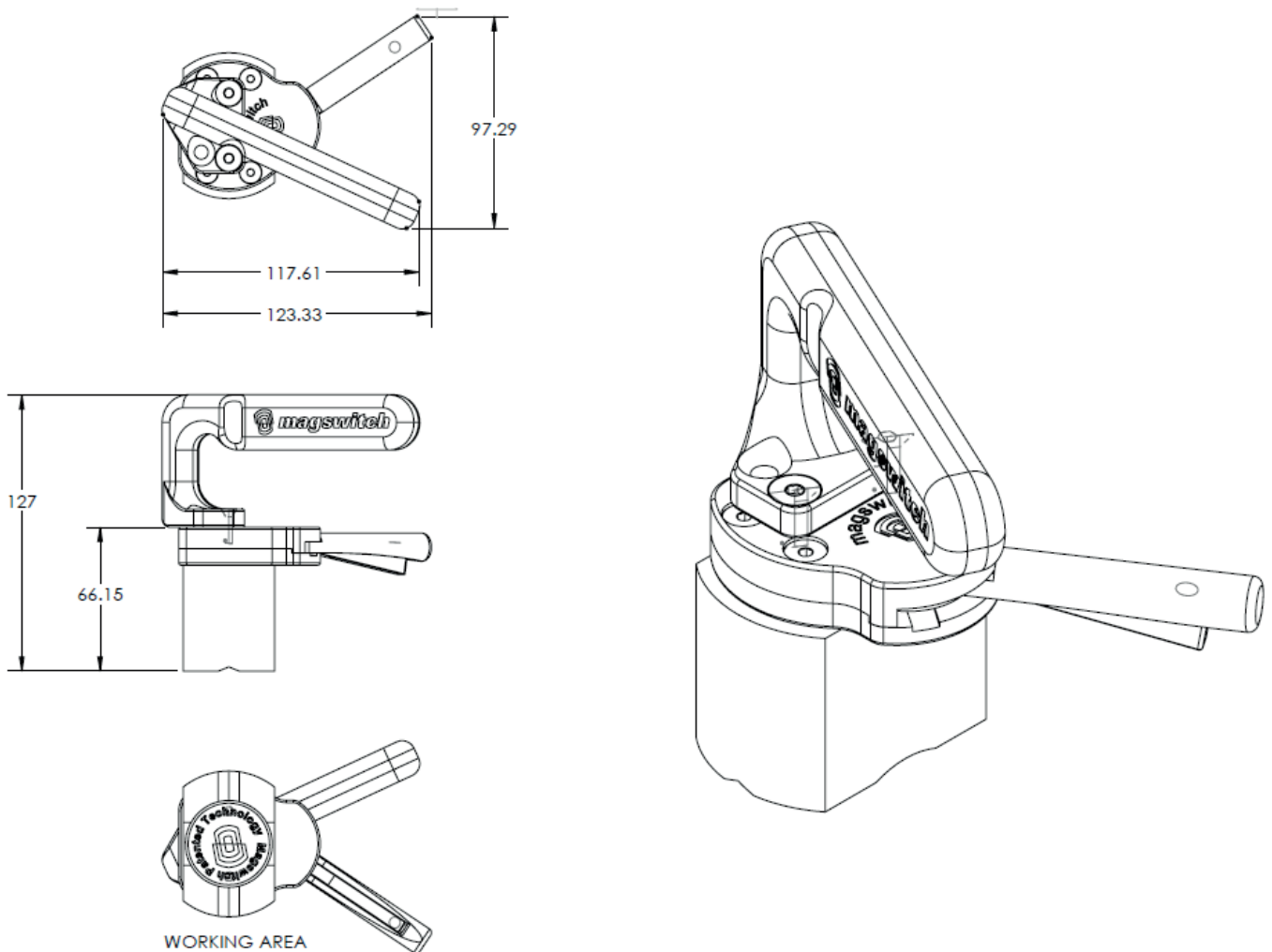
Doc Num 01

Subject to technical and color changes. No liability for errors and misprints assumed. © Magswitch Technologies 2024

400 Fixed Manual Hand Lifter

P/N: 8100810

Drawings



Magswitch Technologies | 1000 S. McCaslin Blvd.
Suite 301 | Superior | Colorado 80027
+1 (303) 468.0662 | sales@magswitch.com

MSA Magnetics | 14250 Judicial Road
Burnsville, MN | 55306 | 651-272-2950
sales@msamagnetics.com

400 FIXED MANUAL HAND LIFTER
8100810

Doc Num 01

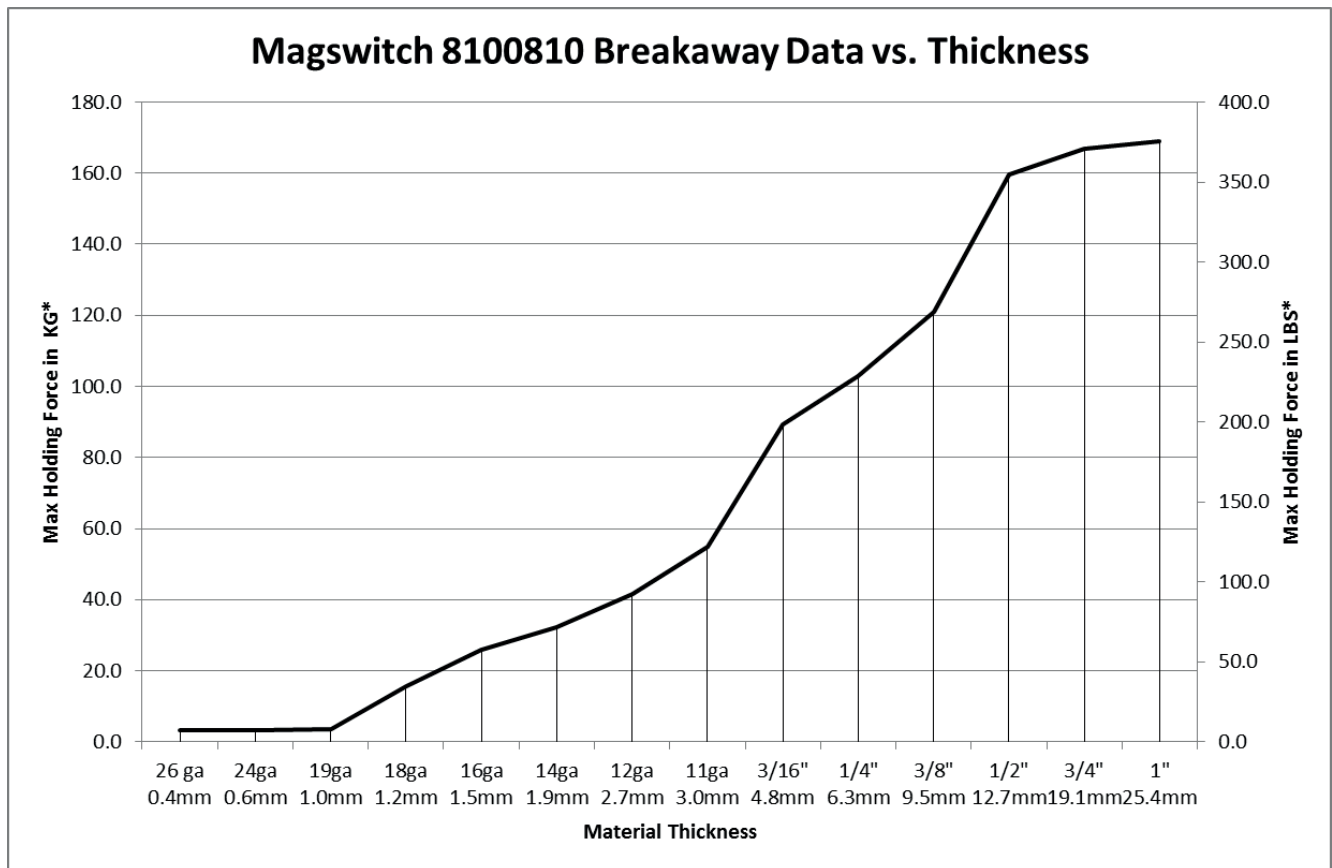
Subject to technical and color changes. No liability for errors and misprints assumed. © Magswitch Technologies 2024



400 Fixed Manual Hand Lifter

P/N: 8100810

Safe Working Load



* Max Breakaway determined in laboratory environment on 2" thick SAE1018 Steel with surface roughness 63 micro inches. Many factors contribute to the actual breakaway force in each application. Always test the magswitch in each application before deployment. Refer to the magswitch information booklet for more information.



Magswitch Technologies | 1000 S. McCaslin Blvd.
Suite 301 | Superior | Colorado 80027
+1 (303) 468.0662 | sales@magswitch.com

MSA Magnetics | 14250 Judicial Road
Burnsville, MN | 55306 | 651-272-2950
sales@msamagnetics.com

400 FIXED MANUAL HAND LIFTER
8100810

Doc Num 01

Subject to technical and color changes. No liability for errors and misprints assumed. © Magswitch Technologies 2024