



AT EVERY STEP OF THE WAY

HAND LIFTER 60-M

P/N: 8100359

Tool Features

The Magswitch Manual Hand Lifter 60-M adds safety and convenience to every workstation. The Magswitch Manual Hand Lifter 60-M lets you pick, place, slide, and reposition steel without using your fingers. No need to touch hot, sharp, or dirty steel. Ideal for small steel handling, dragging sheet, picking, placing and pulling parts out of burn table or handling scrap.



WARNING!
DO NOT OPERATE UNLESS IN
CONTACT WITH FERROUS TARGET

Specifications

Maximum Breakaway Force ^{1,2,4}	217 lb					98.3 kg			
Maximum Shear ^{1,2,4}	48.5 lb					22 kg			
Net Weight	1.7 lb					0.75 kg			
Full Saturation Thickness	0.2"					5 mm			
Minimum De-Stacking Thickness	0.2"					5 mm			
Magnetic Pole Footprint	2.2" x 1.6"					56mm x 41.25mm			
Material Thickness - mm (in)	0.5 (0.02)	0.8 (0.03)	1.0 (0.04)	2.0 (0.08)	3.0 (0.12)	4.0 (0.16)	5.0 (0.20)	6.0 (0.24)	50.0 (2.00)
Maximum Force ^{1,2} - kg (lbs)	8.30 (18.3)	14.50 (32.0)	23.67 (52.2)	45.47 (100.2)	72.57 (160.0)	89.57 (197.5)	98.27 (216.6)	98.30 (216.7)	98.30 (216.7)

1. Determined in laboratory environment on 2" thick SAE1018 Steel with surface roughness 63 micro inches. Many factors contribute to the actual breakaway force and safe working load in each application. Consult a Magswitch Applications Engineer and test the Magswitch in each application before deployment.

2. Determined with SAE1018 Steel L=200mm W=200mm.

3. Values may vary by +/- 5%.

4. Maximum forces listed above are not safe lifting forces. Designer must take into account safety factor when specifying tool.
Magswitch recommends SWL = 3:1 for most applications.

$$SWL \text{ (Safe Working Load)} = \frac{\text{Maximum Force}^4}{\text{Safety Factor} (\geq 5)}$$



Magswitch Technologies | 1000 S. McCaslin Blvd.
Suite 301 | Superior | Colorado 80027
+1 (303) 468.0662 | sales@magswitch.com

MSA Magnetics | 4 Prince of Wales Ave
Unanderra NSW | 2526 | +61 2 4272 8180
sales@msamagnetics.com.au

HAND LIFTER 60-M
8100359

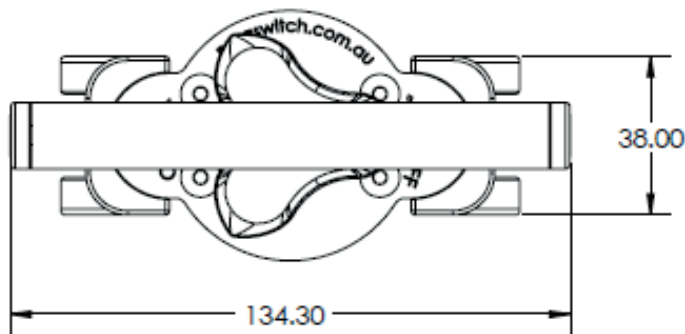
Doc Num 01

Subject to technical and color changes. No liability for errors and misprints assumed. © Magswitch Technologies 2024

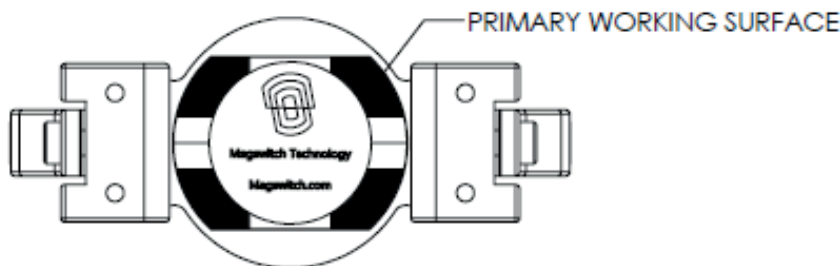
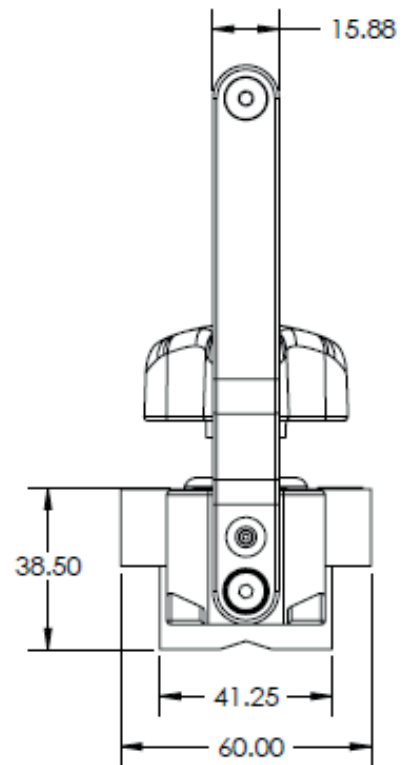
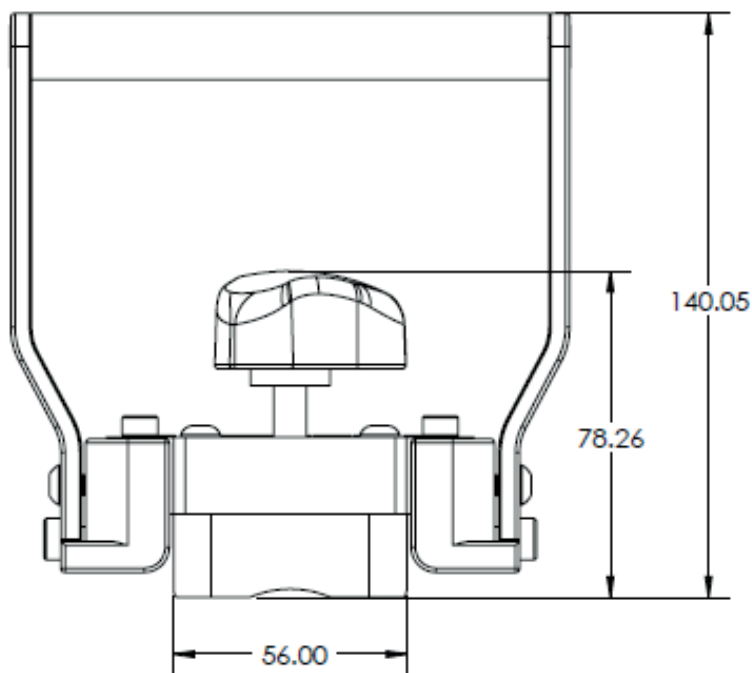
HAND LIFTER 60-M

P/N: 8100359

Drawings



ISO 2768-M	
SIZE (mm)	TOLERANCE
0.5 - 3	±0.1
>3 - 6	+0.1
>6 - 30	+0.2
>30 - 120	±0.3
>120 - 400	+0.5
>400 - 1000	±0.8
>1000 - 2000	±1.2



Magswitch Technologies | 1000 S. McCaslin Blvd.
Suite 301 | Superior | Colorado 80027
+1 (303) 468.0662 | sales@magswitch.com

MSA Magnetics | 4 Prince of Wales Ave
Unanderra NSW | 2526 | +61 2 4272 8180
sales@msamagnetics.com.au

HAND LIFTER 60-M
8100359

Doc Num 01

Subject to technical and color changes. No liability for errors and misprints assumed. © Magswitch Technologies 2024