



AT EVERY STEP OF THE WAY

MLAY1000x2

P/N: 8100484

Tool Features

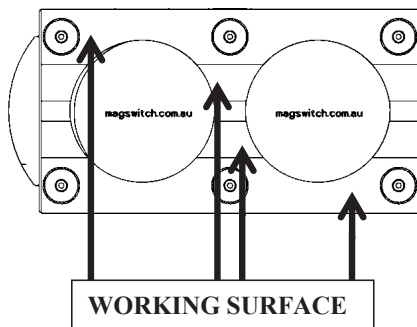
Magswitch MLAY series magnets utilize different size magnets to attain different field depths. This allows for greater working loads and increased control over larger work pieces. The MLAY1000x2 is a lightweight heavy lifting magnet ideal for lifting thick sheet, beams, pipe, and performs well on air gaps such as rust and dirt. It features a unique single swivel hook design for lifting from horizontal to vertical. With customizable pole shoes to fit almost any application, the MLAY is a great all around tool that is perfect for picking pipe and round as well as large plate steel.



WARNING!
DO NOT OPERATE UNLESS IN
CONTACT WITH FERROUS TARGET

Specifications

Max Breakaway *	2000 lbs	907 kg
Safe Working Load *	667 lbs	303 kg
Full Saturation Thickness	1/2"	12.7mm
Max Safe Shear *	125.4 lbs	57 kg
Minimum Thickness for De-Stack	0.8"	19.1mm
Net Weight	23.8 lbs	10.8 kg
Mounting Thread	M8x1.25	
Overall Height	269.5 mm	
Magnetic Pole Footprint	177.5x96.0 mm	



* Max Breakaway determined in laboratory environment on 2" thick SAE1018 Steel with surface roughness 63 micro inches. Many factors contribute to the actual breakaway force in each application. Always test the magswitch in each application before deployment. Refer to the magswitch information booklet for more information.



Magswitch Technologies | 1000 S. McCaslin Blvd.
Suite 301 | Superior | Colorado 80027
+1 (303) 468.0662 | sales@magswitch.com

MSA Magnetix | 14250 Judicial Road
Burnsville, MN | 55306 | 651-272-2950
sales@msamagnetix.com

MLAY1000x2
8100484

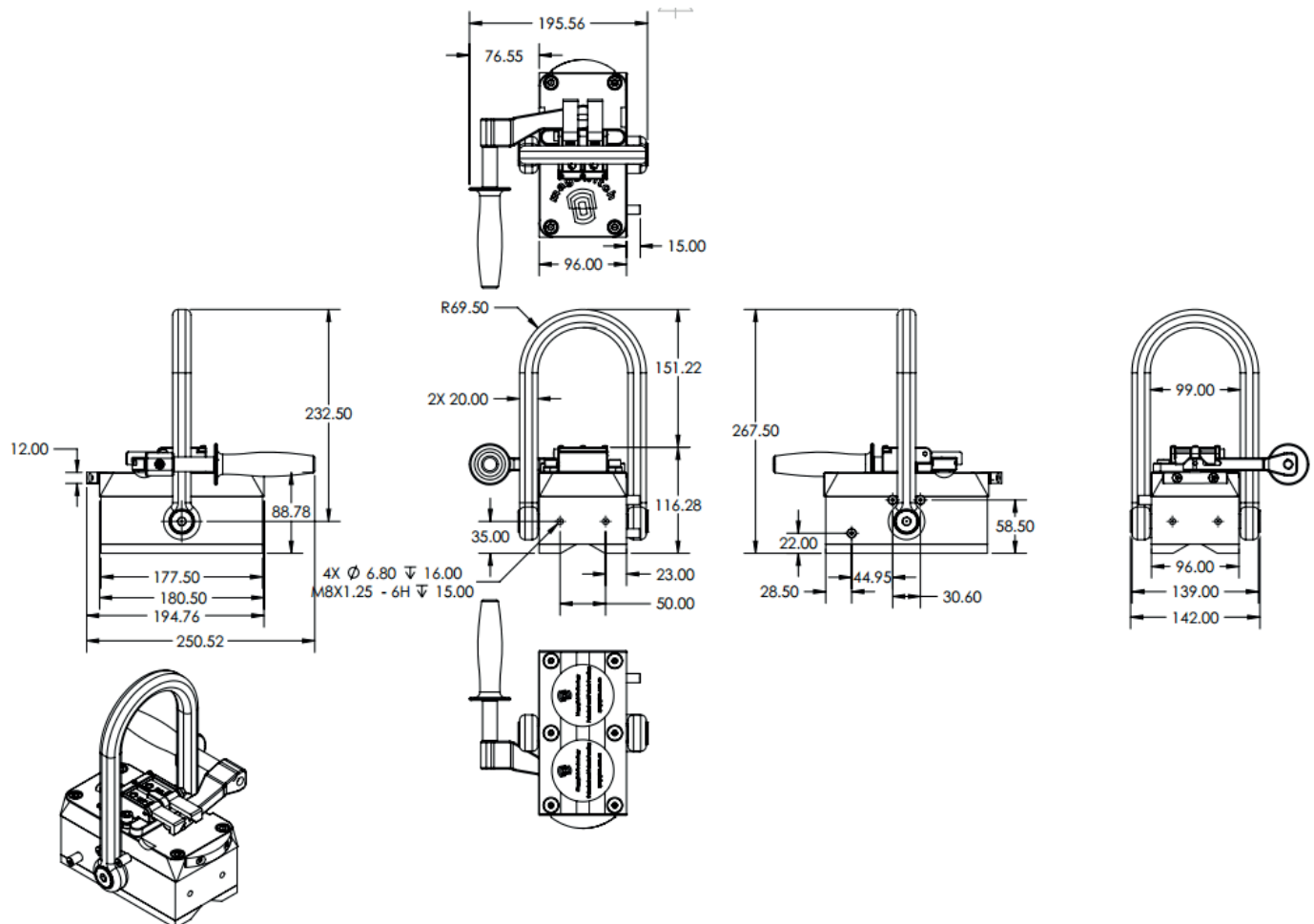
Doc Num 01

Subject to technical and color changes. No liability for errors and misprints assumed. © Magswitch Technologies 2024

MLAY1000x2

P/N: 8100484

Drawings



Magswitch Technologies | 1000 S. McCaslin Blvd.
Suite 301 | Superior | Colorado 80027
+1 (303) 468.0662 | sales@magswitch.com

MSA Magnetics | 14250 Judicial Road
Burnsville, MN | 55306 | 651-272-2950
sales@msamagnetics.com

MLAY1000x2
8100484

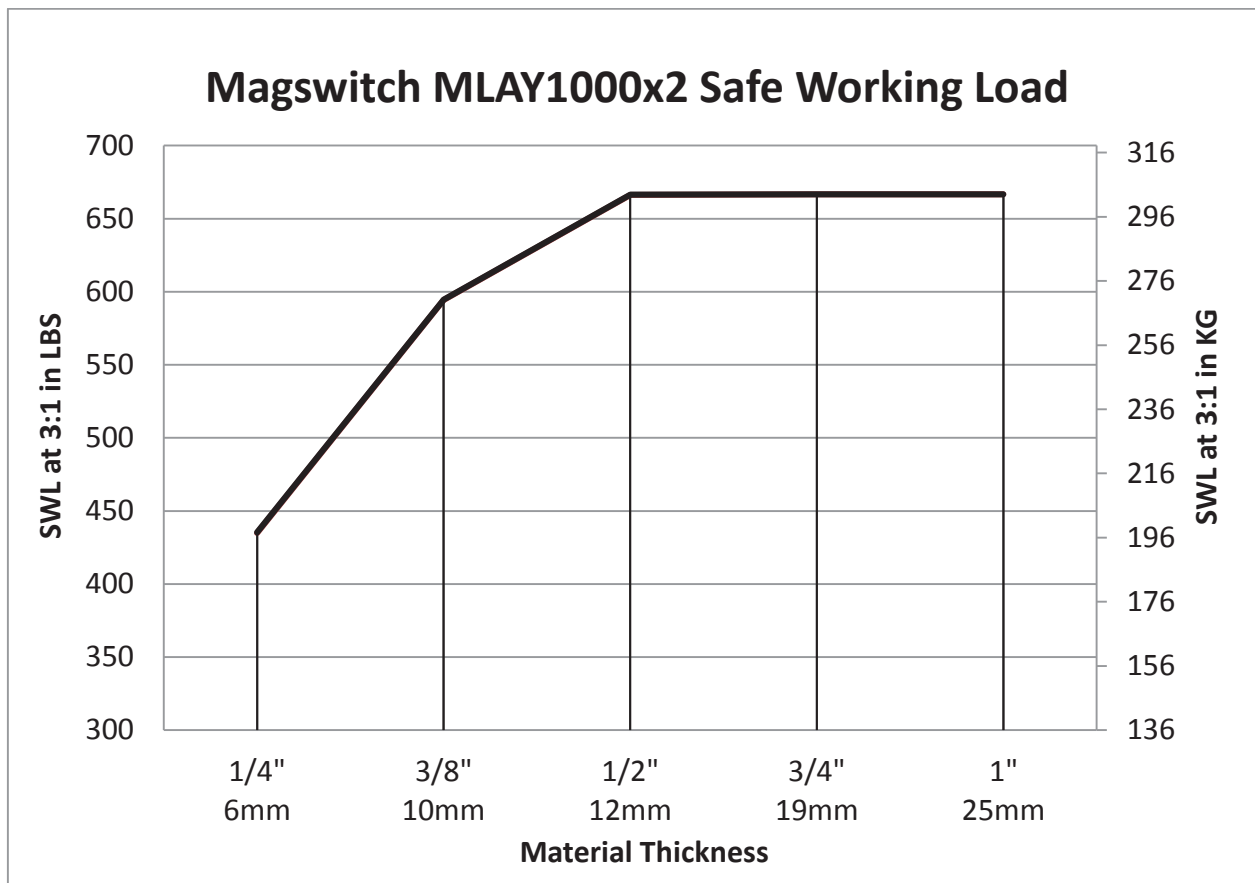
Doc Num 01

Subject to technical and color changes. No liability for errors and misprints assumed. © Magswitch Technologies 2024

MLAY1000x2

P/N: 8100484

Safe Working Load



Magswitch Technologies | 1000 S. McCaslin Blvd.
Suite 301 | Superior | Colorado 80027
+1 (303) 468.0662 | sales@magswitch.com

MSA Magnetics | 14250 Judicial Road
Burnsville, MN | 55306 | 651-272-2950
sales@msamagnetics.com

MLAY1000x2
8100484

Doc Num 01

Subject to technical and color changes. No liability for errors and misprints assumed. © Magswitch Technologies 2024