



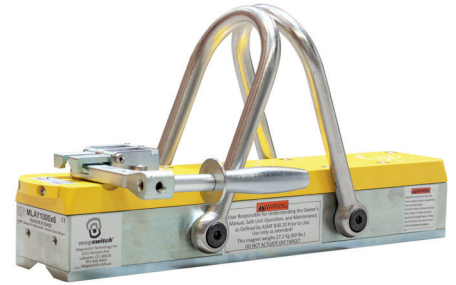
AT EVERY STEP OF THE WAY

# MLAY1000x6

P/N: 8100482

## Tool Features

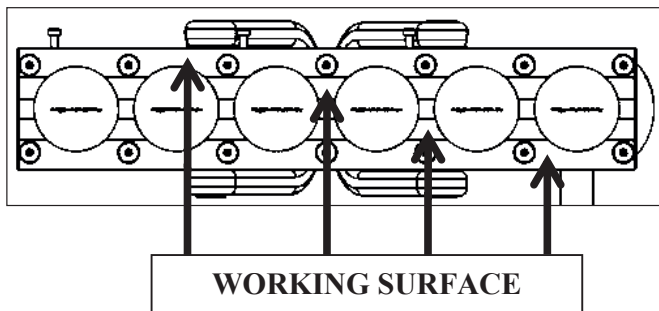
Magswitch MLAY series magnets utilize different size magnets to attain different field depths. This allows for greater working loads and increased control over larger work pieces. The MLAY1000x6 is a lightweight heavy lifting magnet ideal for lifting large thick sheets, beams, pipe, and performs well on air gaps such as rust and dirt. It features a unique dual swivel hook design for both load stability and lifting from horizontal to vertical. With customizable pole shoes to fit almost any application, the MLAY is a great all around tool that is perfect for picking pipe and round as well as large plate steel.



**WARNING!**  
**DO NOT OPERATE UNLESS IN**  
**CONTACT WITH FERROUS TARGET**

## Specifications

Max Breakaway *	6088 lbs	2767 kg
Safe Working Load *	2029 lbs	922 kg
Full Saturation Thickness	1"	25.4mm
Max Safe Shear *	617 lbs	280.4 kg
Minimum Thickness for De-Stack	1"	25.4mm
Net Weight	60.0 lbs	27.2 kg
Mounting Thread	M8x1.25	
Overall Height	253.3 mm	
Magnetic Pole Footprint	492.75 x 97.6 mm	



\* Max Breakaway determined in laboratory environment on 2" thick SAE1018 Steel with surface roughness 63 micro inches. Many factors contribute to the actual breakaway force in each application. Always test the magswitch in each application before deployment. Refer to the magswitch information booklet for more information.



Magswitch Technologies | 1000 S. McCaslin Blvd.  
Suite 301 | Superior | Colorado 80027  
+1 (303) 468.0662 | sales@magswitch.com

MSA Magnetix | 14250 Judicial Road  
Burnsville, MN | 55306 | 651-272-2950  
sales@msamagnetix.com

MLAY1000x6  
8100482

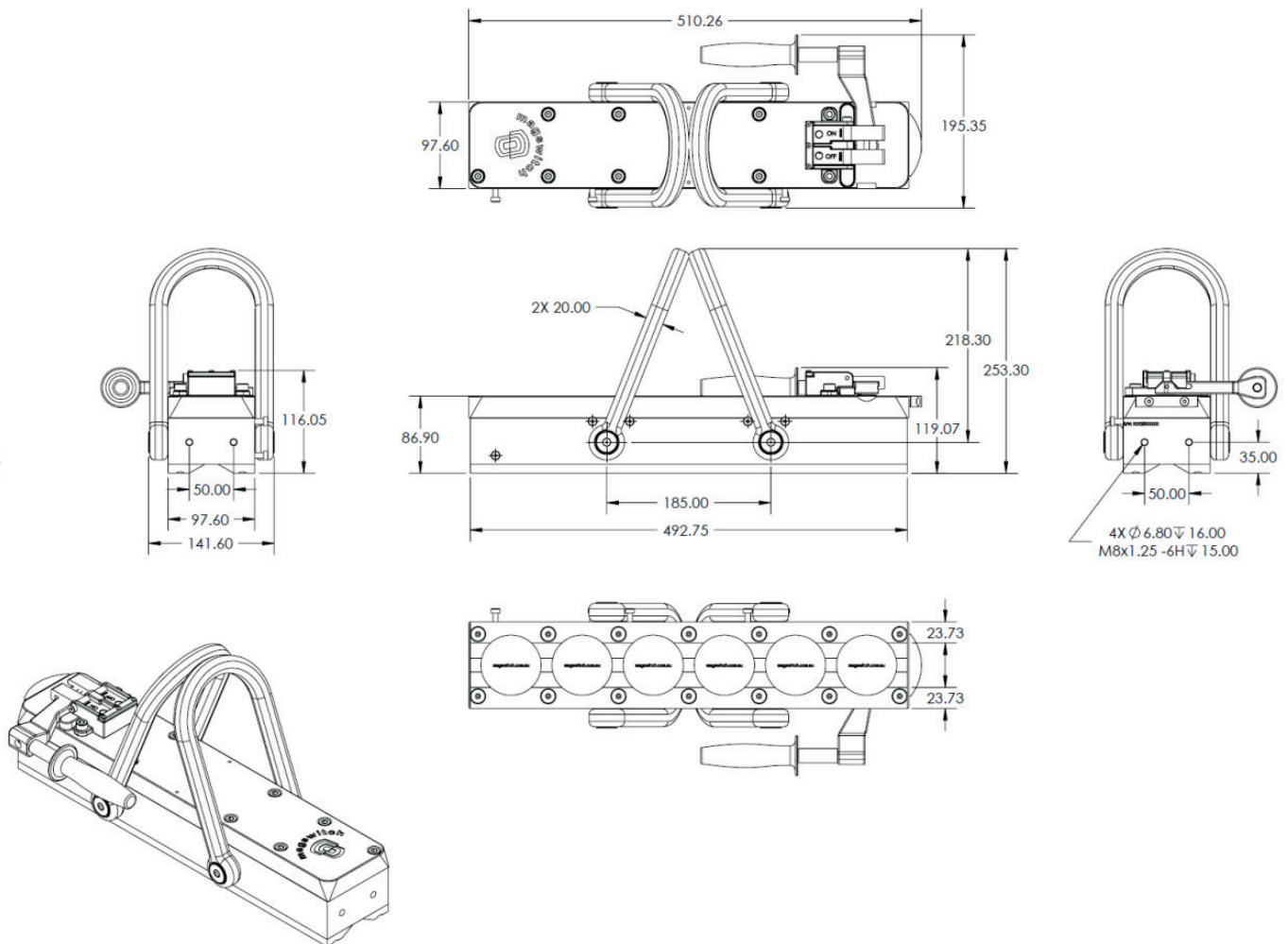
Doc Num 01

Subject to technical and color changes. No liability for errors and misprints assumed. © Magswitch Technologies 2024

# MLAY1000x6

P/N: 8100482

## Drawings



Magswitch Technologies | 1000 S. McCaslin Blvd.  
Suite 301 | Superior | Colorado 80027  
+1 (303) 468.0662 | sales@magswitch.com

MSA Magnetics | 14250 Judicial Road  
Burnsville, MN | 55306 | 651-272-2950  
sales@msamagnetics.com

**MLAY1000x6**  
**8100482**

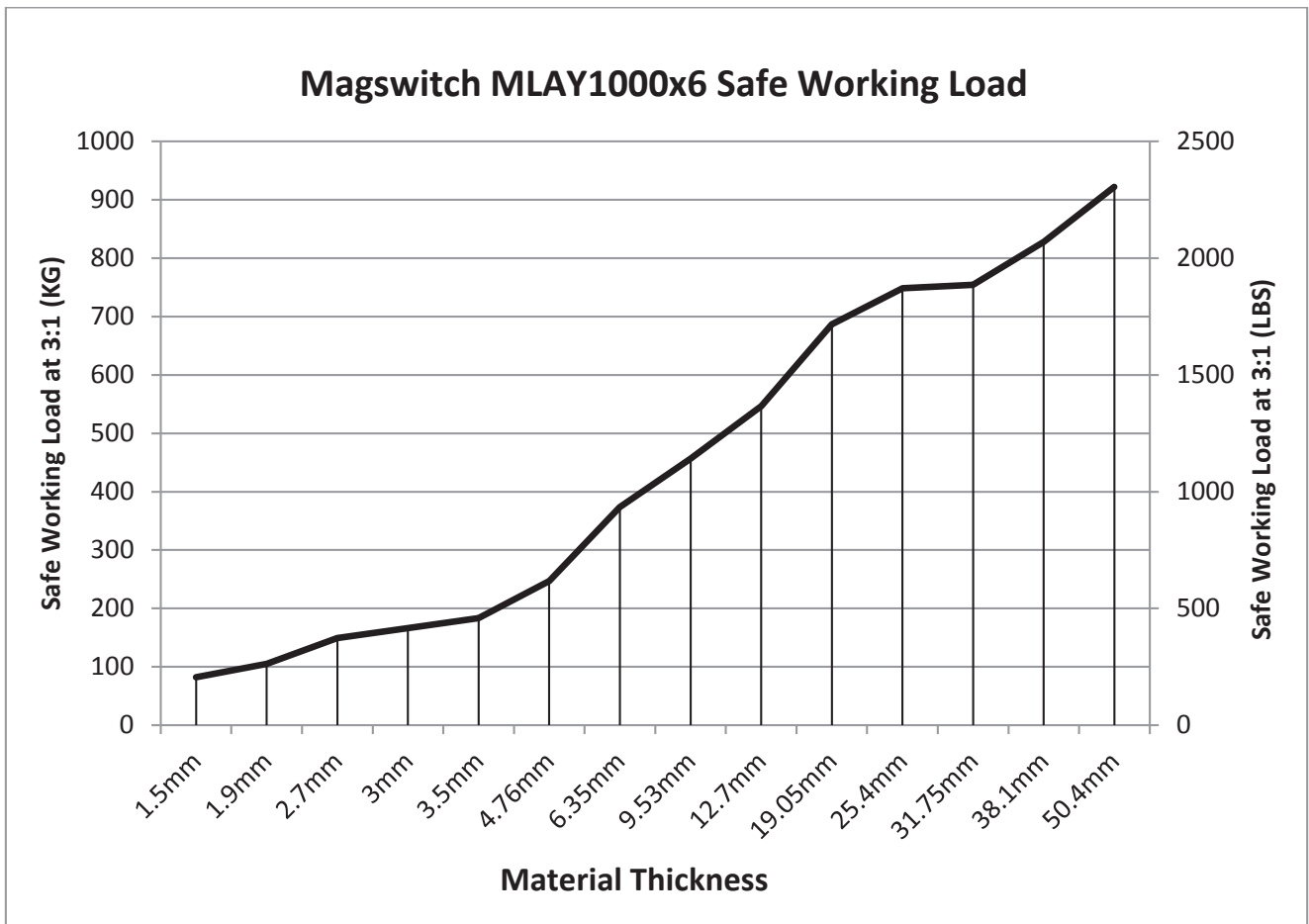
Doc Num 01

Subject to technical and color changes. No liability for errors and misprints assumed. © Magswitch Technologies 2024

# MLAY1000x6

P/N: 8100482

## Safe Working Load



Magswitch Technologies | 1000 S. McCaslin Blvd.  
Suite 301 | Superior | Colorado 80027  
+1 (303) 468.0662 | sales@magswitch.com

MSA Magnetics | 14250 Judicial Road  
Burnsville, MN | 55306 | 651-272-2950  
sales@msamagnetics.com

**MLAY1000x6**  
**8100482**

Doc Num 01

Subject to technical and color changes. No liability for errors and misprints assumed. © Magswitch Technologies 2024