



AT EVERY STEP OF THE WAY

MagMount 400

P/N: 8100523

Tool Features

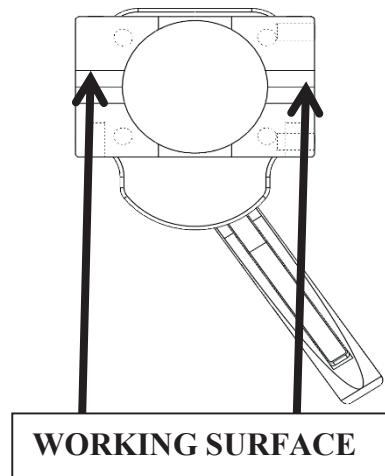
The Magswitch MagMount is a single lever operation switchable magnet that allows for easy movement and placement of a tool. The top mount magnets feature two magnets are ideal for supporting fixtures over a distance. The fixed bar magnet is for flat steel, the swivel bar magnet is for round or uneven shapes.



WARNING!
DO NOT OPERATE UNLESS IN
CONTACT WITH FERROUS TARGET

Specifications

Max Breakaway *	400 lbs	182 kg
Full Saturation Thickness	1/4"	6 mm
Net Weight	1.2 lbs	0.5 kg
Overall Height	65 mm	
Magnetic Pole Footprint	64 mm x 41.26 mm	



* Max Breakaway determined in laboratory environment on 2" thick SAE1018 Steel with surface roughness 63 micro inches. Many factors contribute to the actual breakaway force in each application. Always test the magswitch in each application before deployment. Refer to the magswitch information booklet for more information.



Magswitch Technologies | 1000 S. McCaslin Blvd.
Suite 301 | Superior | Colorado 80027
+1 (303) 468.0662 | sales@magswitch.com

MSA Magnetix | 4 Prince of Wales Ave
Unanderra NSW | 2526 | +61 2 4272 8180
sales@msamagnetix.com.au

MAGMOUNT 400
8100523

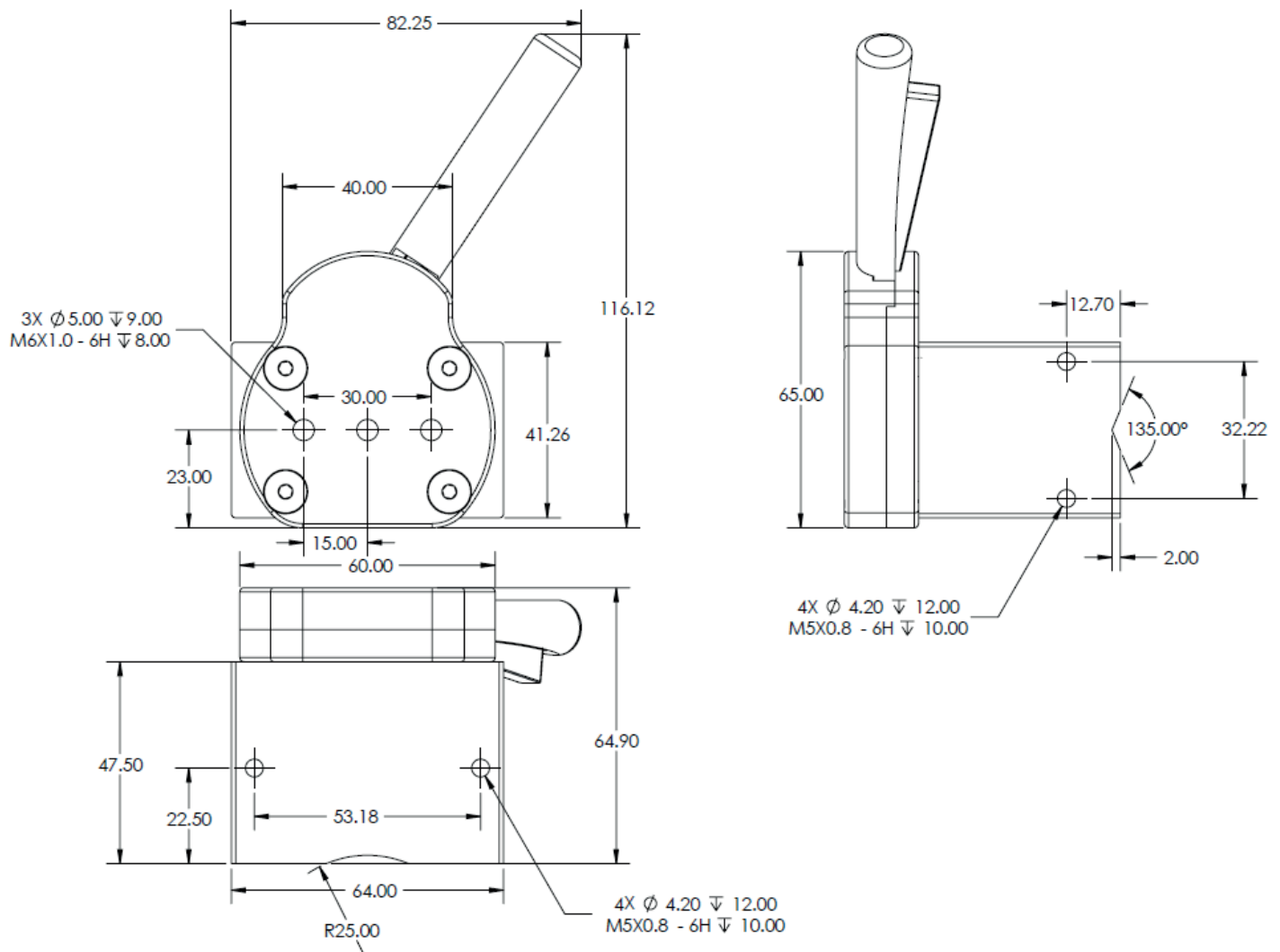
Doc Num 01

Subject to technical and color changes. No liability for errors and misprints assumed. © Magswitch Technologies 2024

MagMount 400

P/N: 8100523

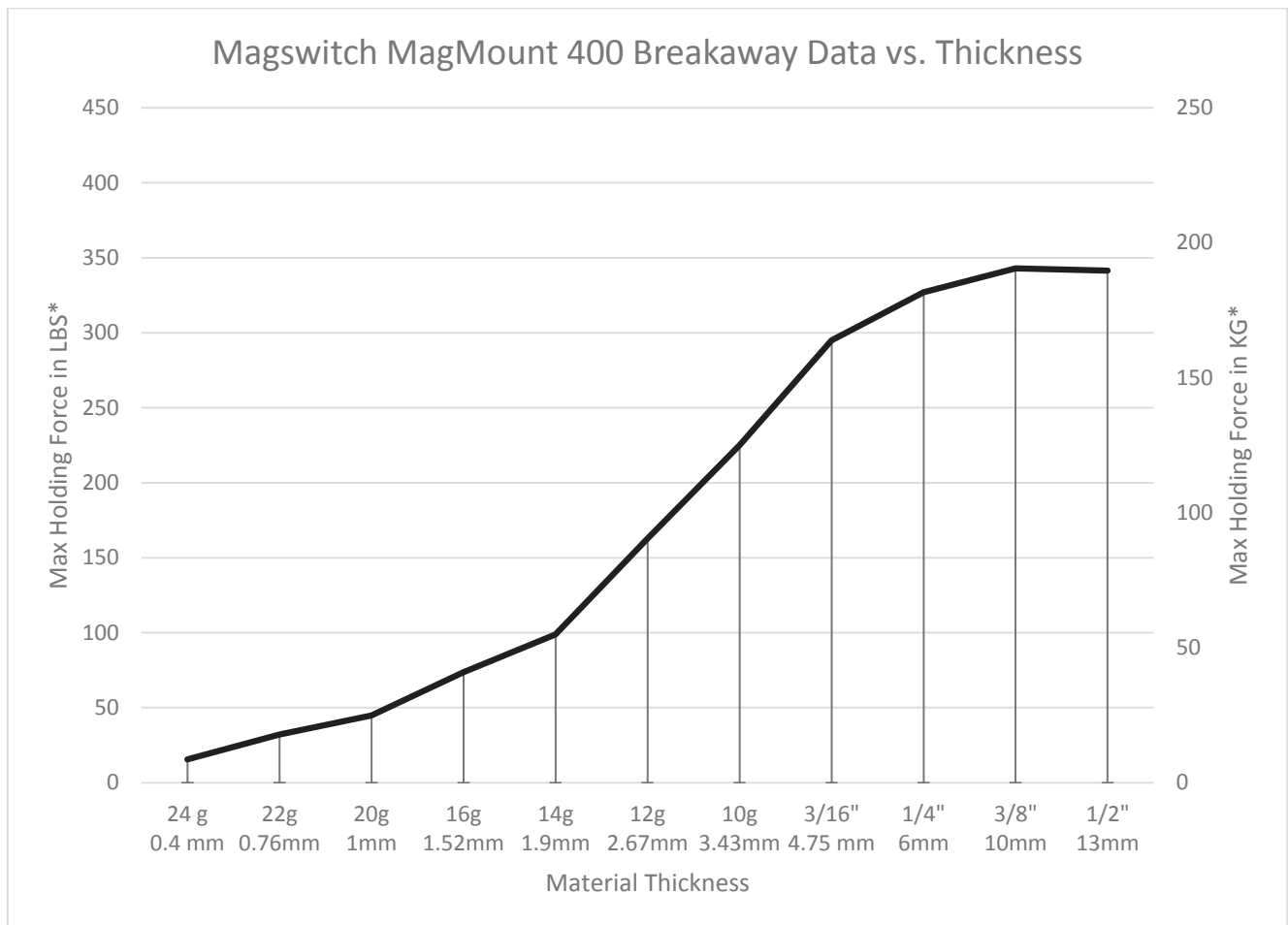
Drawings



MagMount 400

P/N: 8100523

Breakaway Data



Magswitch Technologies | 1000 S. McCaslin Blvd.
Suite 301 | Superior | Colorado 80027
+1 (303) 468.0662 | sales@magswitch.com

MSA Magnetics | 4 Prince of Wales Ave
Unanderra NSW | 2526 | +61 2 4272 8180
sales@msamagnetics.com.au

MAGMOUNT 400
8100523

Doc Num 01

Subject to technical and color changes. No liability for errors and misprints assumed. © Magswitch Technologies 2024