



AT EVERY STEP OF THE WAY

Multi Angle 400

P/N: 8100438

Tool Features

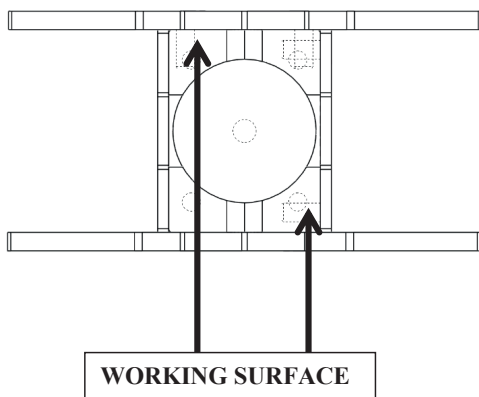
The Magswitch Multi Angle Magvise revolutionizes the vise world; imagine a vise that you don't have to bolt in place! The Magswitch Multi Angle Magvise sets up in seconds and holds flat, round or odd shaped pieces. Perfect for drilling, cutting, grinding and beveling of small to medium size pieces. Doubles as a multi angle work holding tool. Two sizes offer incredible hold force.



WARNING!
DO NOT OPERATE UNLESS IN
CONTACT WITH FERROUS TARGET

Specifications

Max Breakaway *	400 lbs	181 kg
Full Saturation Thickness	0.1345 in	3.43 mm
2:1 Shear Working Load *	20 lbs	9 kg
Net Weight	2.6 lbs	1.2 kg
Overall Height	95 mm	
Magnetic Pole Footprint	64 mm x 41.26 mm	



* Max Breakaway determined in laboratory environment on 2" thick SAE1018 Steel with surface roughness 63 micro inches. Many factors contribute to the actual breakaway force in each application. Always test the magswitch in each application before deployment. Refer to the magswitch information booklet for more information.



Magswitch Technologies | 1000 S. McCaslin Blvd.
Suite 301 | Superior | Colorado 80027
+1 (303) 468.0662 | sales@magswitch.com

MSA Magnetics | 14250 Judicial Road
Burnsville, MN | 55306 | 651-272-295
sales@msamagnetics.com

MULTI ANGLE 400
8100438

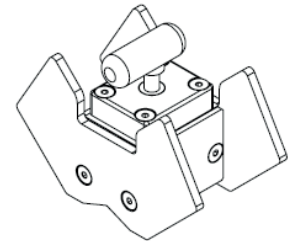
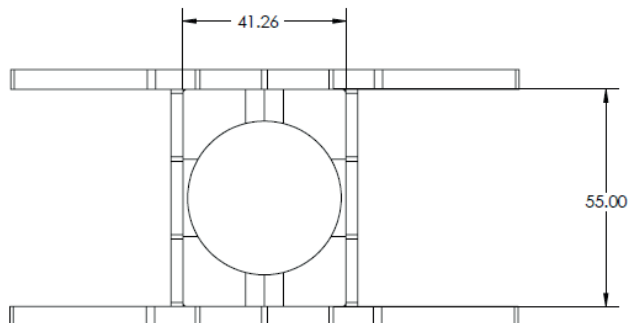
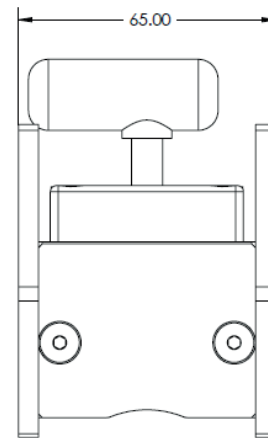
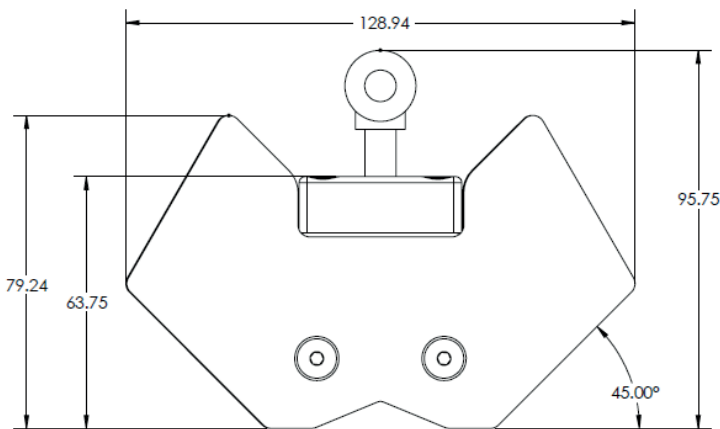
Doc Num 01

Subject to technical and color changes. No liability for errors and misprints assumed. © Magswitch Technologies 2024

Multi Angle 400

P/N: 8100438

Drawings



Magswitch Technologies | 1000 S. McCaslin Blvd.
Suite 301 | Superior | Colorado 80027
+1 (303) 468.0662 | sales@magswitch.com

MSA Magnetics | 14250 Judicial Road
Burnsville, MN | 55306 | 651-272-295
sales@msamagnetics.com

MULTI ANGLE 400
8100438

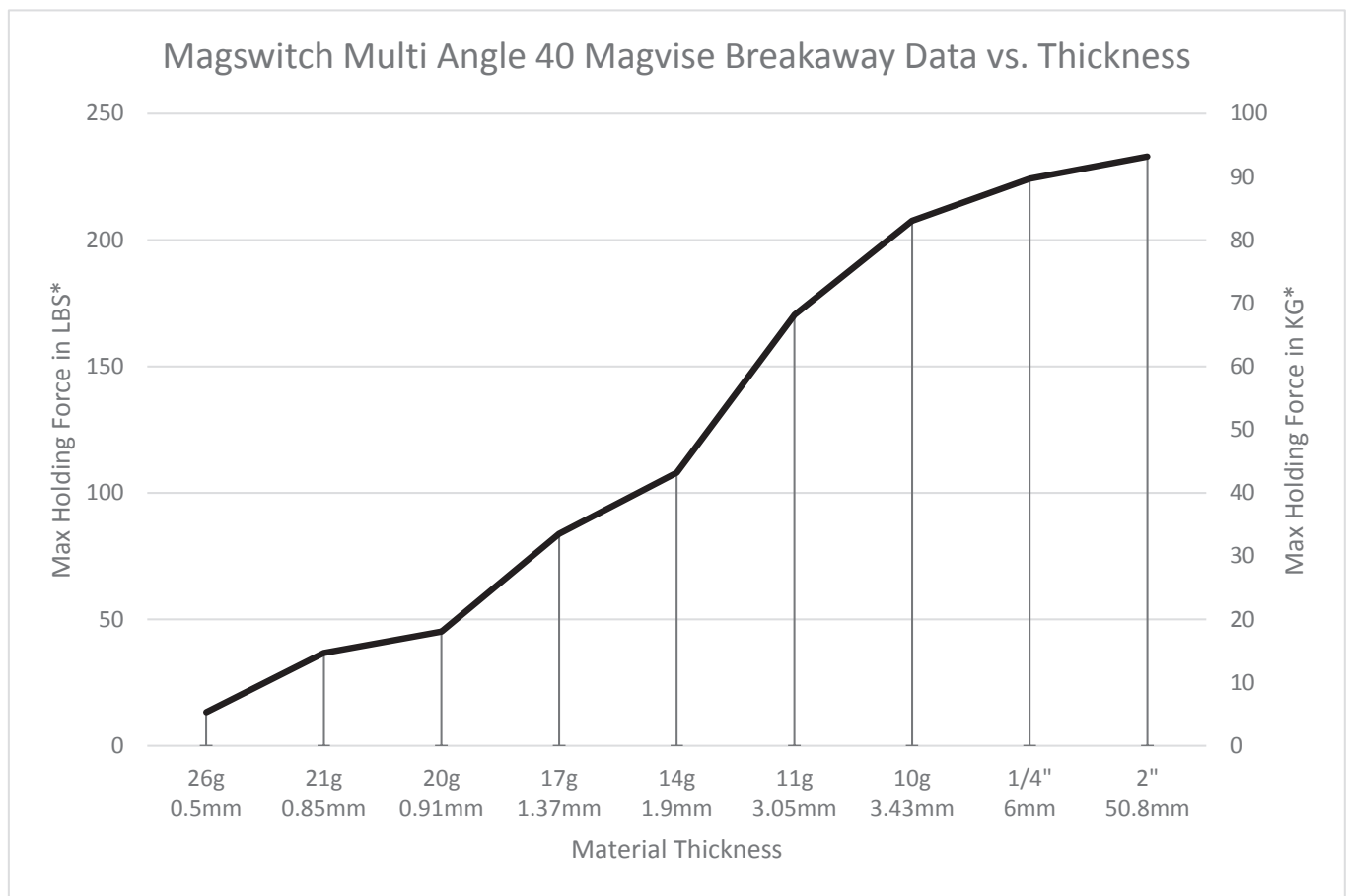
Doc Num 01

Subject to technical and color changes. No liability for errors and misprints assumed. © Magswitch Technologies 2024

Multi Angle 400

P/N: 8100438

Breakaway Data



* Max Breakaway determined in laboratory environment on 2" thick SAE1018 Steel with surface roughness 63 micro inches. Many factors contribute to the actual breakaway force in each application. Always test the magswitch in each application before deployment. Refer to the magswitch information booklet for more information.



Magswitch Technologies | 1000 S. McCaslin Blvd.
Suite 301 | Superior | Colorado 80027
+1 (303) 468.0662 | sales@magswitch.com

MSA Magnetics | 14250 Judicial Road
Burnsville, MN | 55306 | 651-272-295
sales@msamagnetics.com

MULTI ANGLE 400
8100438

Doc Num 01

Subject to technical and color changes. No liability for errors and misprints assumed. © Magswitch Technologies 2024